

COLLABORATION
ACTION
RESPONSIVENESS
ENGAGEMENT
SHIFTING ATTITUDES



Guelph & Wellington Task Force for Poverty Elimination



strategicplan

Guelph & Wellington Task Force for Poverty Elimination

For more information contact:

Guelph & Wellington Task Force for Poverty Elimination

c/o: Wellington-Dufferin-Guelph Public Health

website: www.gwpoverty.ca

telephone: 1-800-265-7293 ext. 4622

email: info@gwpoverty.ca

! **POVERTY**
GUELPH & WELLINGTON TASK FORCE FOR
ELIMINATION



how we got here

“If you want to go fast, go alone. If you want to go far, go with others.”

(African Proverb)

The Guelph & Wellington Task Force was convened in May 2009, after a community forum on poverty inspired a variety of stakeholders to tackle issues in a collaborative way. For the first few years, the Poverty Task Force (PTF), focused on supporting action and finding solutions related to four priorities – food security, income security, housing security, and access to recreation. This involved a great deal of networking – locally, provincially, and nationally – as well as finding a balance between advocating for long-term system change and identifying short-term supports to make more immediate changes for those currently living in poverty.

“We have a strategic plan. It’s called doing things.”

(Herb Kelleher)

The first PTF strategic plan was created in the early days of the PTF. While it was a helpful guiding document during the PTF development phase, over time the PTF became more aware and confident about its role in the community and we focused more on “doing things” than on following a plan. Sometimes this worked, sometimes it didn’t. Either way, we learned a lot along the way.

For the past year, the PTF member committee has spent a considerable amount of time creating a new strategic plan to guide us through the next three years. We took stock of the actions we have supported over the past few years and discussed how they aligned with the original strategic directions of the PTF. We asked ourselves about the strengths of the PTF, what our role should be in the community moving forward, and how we could achieve it. We identified new priorities, actions and created pathways to help us achieve success. We determined ways to measure our impact and created a framework to increase collaboration, networking, and partnerships. We created a plan that we are excited to follow – a plan that allows us to be strategic, but also “do things.”

“Alone we can do so little; together we can do so much.”

(Helen Keller)



Poverty will be eliminated in Guelph & Wellington.



To work collaboratively, informed by diverse voices of experience, to take local action and advocate for system and policy change to address the root causes of poverty.

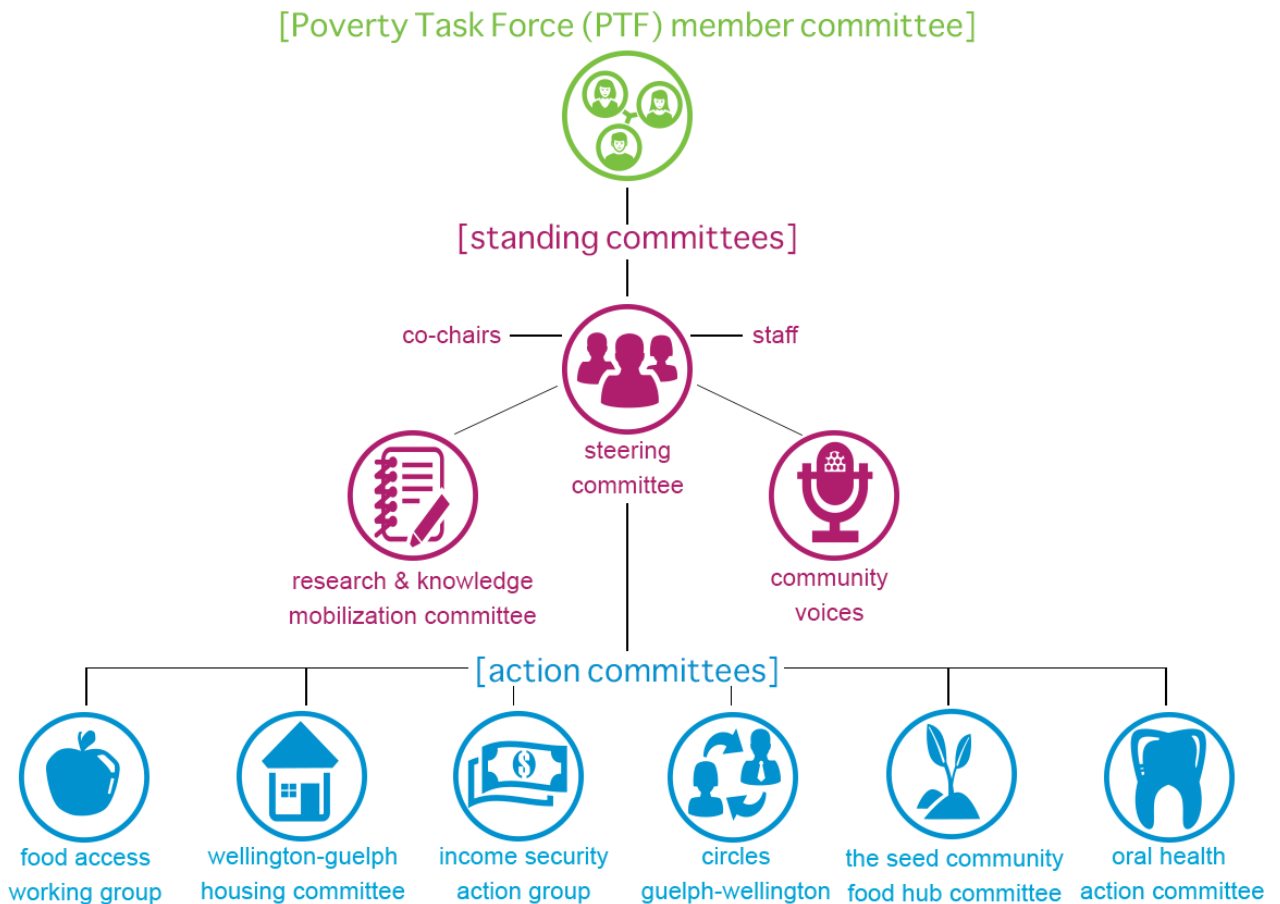


Our community CARES. Together we value:

- Collaboration
- Action
- Responsiveness
- Engagement
- Shifting attitudes

our organizational framework

Our framework shows how the Poverty Task Force is put together and how it works. We use a structure that focuses on three different types of committees – a member committee, standing committees, and action committees.



Comprised of a maximum of 40 members from different sectors in Guelph and Wellington, the **PTF member committee** advises the work of the PTF, provides linkages in the community, shares expertise, and works collaboratively to eliminate poverty.

Standing committees provide ongoing support and act as a resource to the PTF member committee and action committees. They also take action in response to an ongoing or emerging community need.

Action committees are collaborative committees in the community that are focused on an issue that aligns with the PTF mission, vision, values, and priorities.



The PTF **Steering Committee** provides strategic guidance and oversight in the management of the PTF's resources and ensures that the mission, vision & values are being effectively followed.



research & knowledge
mobilization committee

The **Research & Knowledge Mobilization Committee** conducts solution-based research, enhances knowledge development, and supports knowledge exchange on poverty related issues. The committee also evaluates and reports on the impact of PTF actions.



Community Voices advises the work of the PTF by providing insights and feedback based on their collective lived experience in poverty, and increases public awareness and understanding of the issues and consequences related to poverty.



The **Food Access Working Group** works collaboratively to ensure those experiencing economic hardship in our community have access to culturally acceptable, safe and nutritious foods to meet their dietary needs.



The **Wellington-Guelph Housing Committee** involves a variety of stakeholders in educational, collaborative, and advocacy activities aimed at addressing, easing, and preventing issues related to homelessness and precarious housing.



The **Income Security Action Group** increases awareness of issues and proposed solutions related to income security through advocacy and community engagement.



Circles Guelph-Wellington is an innovative model to end poverty that promotes the vision to end poverty by building intentional relationships, identifying barriers, implementing solutions, creating effective partnerships, and changing the goals of the system.



The **Seed Community Food Hub Committee** supports the implementation of short-term recommendations to improve the current emergency food system, as well as works to develop a community food hub for our community.



The **Oral Health Action Committee** supports local action and advocacy efforts to improve access to affordable oral health care.

our pathways

Success in our work requires four pathways to deliver results. These four pathways provide a visual picture of our work across a continuum and highlight the specific role of the PTF in our community.



1. Collaborations & Partnerships

How we do this:

- Build purposeful partnerships with diverse community stakeholders and networks.
- Provide opportunities for all community members to become involved in poverty elimination efforts and to engage in dialogue about identified issues.

2. Leadership

How we do this:

- Champion and give voice to the need for system and policy change for service providers and people living in poverty.
- Lead and support actions to meet the short- and long-term needs of people living in poverty.

3. Research & Knowledge Mobilization

How we do this:

- Conduct solution-based research, enhance knowledge development, and support knowledge exchange on poverty related issues.
- Develop and implement an evaluation framework that measures and reports on the impact of Poverty Task Force actions.

4. Strategic Communications

How we do this:

- Increase public awareness and understanding of the issues and consequences associated with poverty in Guelph and Wellington.
- Promote the work of the Poverty Task Force.

our priorities 2014 - 2017

The PTF has identified four priorities for the next three years – income inequality, affordable housing & homelessness, food insecurity, and health inequities. Each priority includes a goal aimed at improving opportunities, access, and resources for everyone in Guelph and Wellington in order to eliminate poverty and its impact.



* County of Wellington 10-year Housing & Homelessness Plan

our actions2014

The PTF has identified specific actions to take in 2014. The actions are primarily implemented by the Action Committees, but sometimes require the PTF to convene new conversations and partnerships to move the issue forward. Moving forward through the course of the PTF Strategic Plan, these actions will be reviewed on an annual basis.



income
inequality

- Support the development of Guelph and Wellington as a **living wage** community.
- Advocate for an increased **minimum wage**.
- Support education on **financial literacy**.
- Advocate for the implementation of the **final recommendations from the Review of Social Assistance in Ontario**.



affordable
housing &
homelessness

- Support key elements of the **10-year Housing and Homelessness Plan** for Guelph and Wellington.
- Develop and distribute **Housing Access Guides**.
- Advocate for the implementation of the **Ontario Housing Benefit**.



food insecurity

- Support initiatives that move from emergency and short-term relief strategies towards longer-term systems change and policy work, such as the development of a **community food hub**.
- Support the implementation and evaluate the impact of the **Guiding Principles for Eligibility Criteria** among emergency food providers in Guelph and Wellington.
- Support community stakeholders to **implement the short-term recommendations** from A New Vision for Emergency Food Services in Guelph-Wellington.



health inequities

- Support local action and long-term advocacy to improve **access to oral health care**.
- Advocate for **health benefits to be available for all low-income Ontarians** and to be delivered outside the social assistance system.



measuring our success

The Research and Knowledge Mobilization (R&KMb) Committee will provide evaluation and knowledge mobilization support to PTF Action Committees. Projects to be evaluated will initially be identified by the PTF Coordinator. Members of the R&KMb Committee will then consult with the Action Committee to lead them through a process of developing and implementing an evaluation plan.

Primary Roles:

R&KMb Committee - assists in development of evaluation and KMb plans and is primarily responsible for the development of research tools, data management and data analysis.

Action Committees - primarily responsible for data collection and the implementation of the knowledge mobilization plan and will be asked for input on all aspects of evaluation and KMb plans.



role for the community

The PTF will continue to engage the community at every opportunity in delivering our pathways and working toward achieving our priority goals and actions. The PTF will support public participation in many forms – through social media and newsletters, on our website, and via workshops and public events. All of the PTF Action Committees, as well as the Research & Knowledge Mobilization Committee and Community Voices, encourage the community to participate as members.

Together, working with the community, we will eliminate poverty in Guelph and Wellington.

How to connect with us:

Website: www.gwpoverty.ca
Phone: 1-800-265-7293 ext. 4622
Email: info@gwpoverty.ca
Twitter: @gwpoverty